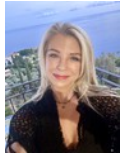




Gavin Warmback
0825646858
gavin@executiveproperties.co.za



Nicci Humphreys
Principal Property Practitioner
Registered with PPRA

(FFC 202 221 783 2)
0824920111
nicci@executiveproperties.co.za

Contact Dainfern

011 4694107

11 Mulberry Hill Office Park
Broadacres Drive
Cnr William Nicol Road
Dainfern



Web Ref RL599



R35,000 pm

Monthly Levy R4,790 Monthly Rates R1,500 Lease Period 12 months
Availability Immediately Deposit R35,000 Annual Escalation Negotiable

🛏️ 3 🚿 2.5 🚗 2

Immaculate 3 bedroom Cluster for sale in Dainfern Golf Estate

This delightful double storey lock up and go cluster offers 3 bedrooms and 2 bathrooms on the top level with a large open-plan entertainment area and guest loo on the ground floor. The main suite has a dressing room, full bathroom plus a north facing balcony. The kitchen has a separate laundry with ample space for appliances. Enjoy a beautiful landscaped garden and sparkling pool which flow from the covered patio into a secluded area. Double garage.

Dainfern is a mature, secure Golf and Residential Estate which has evolved over 1200 homes since its inception in 1992. The estate offers an unparalleled lifestyle and recreational experience centered around the Gary Player designed golf course enhanced by nature trails, parks and sports facilities all located in its own 320 hectare suburb. Dainfern represents a variety of...

Features

Pets Allowed Yes

Interior
Bedrooms 3
Bathrooms 2.5
Kitchens 1
Recep. Rooms 2
Furnished No

Exterior
Garages 2
Security Yes
Pool Yes
Views No

Sizes
Floor Size 210m²
Land Size 400m²

Extras
Underfloor heating in the bathrooms

