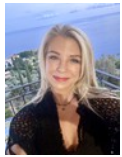


3 Bedroom Cluster To Let in Dainfern Golf Estate



Nicci Humphreys
Principal Property Practitioner
Registered with PPRA (FFC 202 221 783 2)
0824920111

nicci@executiveproperties.co.za



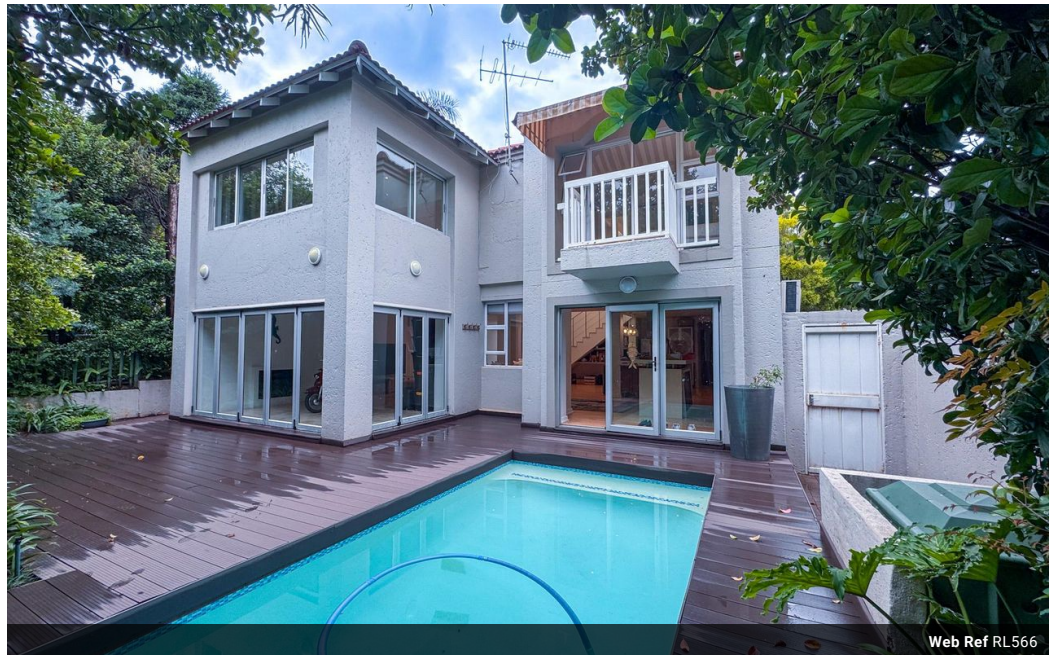
Lara Pretorius
0836509044

lara@executiveproperties.co.za

Contact Dainfern

011 4694107

11 Mulberry Hill Office Park
Broadacres Drive
Cnr William Nicol Road
Dainfern



Web Ref RL566



R35,000 pm

Monthly Levy R4,790

Lease Period 12 months

Availability Immediately

Deposit R35,000

Annual Escalation Negotiable

3 2.5 2

3 Bedroom Cluster To Let in Dainfern Golf Estate

Newly renovated cluster in Dainfern Charming newly refurbished double storey unit within the golf estate boasting stylish modern finishes. Neutral tones and open-plan living throughout the reception areas create a feeling of seamless space. The open plan reception rooms lead off onto a delightful covered patio, small garden, wooden deck and pool. A functional kitchen is open plan and has a separate scullery with door leading into the double garages. 3 bedrooms, 2.5 bathrooms, open plan lounge/dining room, double garage and staff.

Dainfern is a premier Golf and Residential Estate that has grown to include over 1,200 homes since its foundation in 1992. Nestled around a Gary Player-designed golf course, the estate offers a unique lifestyle and recreational experience, complemented by nature trails, parks, and sports facilities,...

Features

Pets Allowed Yes

Interior

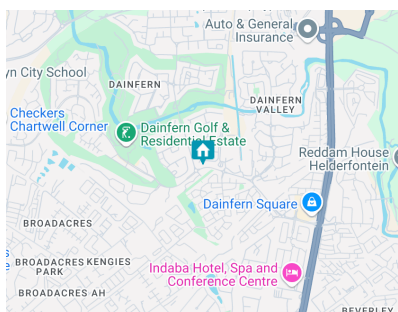
Bedrooms 3
Bathrooms 2.5
Kitchens 1
Recep. Rooms 2
Furnished No

Exterior

Garages 2
Security Yes
Dom. Accom. 1
Pool Yes
Views No

Extras

Aircon, gas fireplace



<https://www.executiveproperties.co.za>