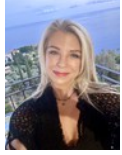


Lara Pretorius
0836509044
lara@executiveproperties.co.za



Nicci Humphreys
Principal Property Practitioner
Registered with PPRA

(FFC 202 221 783 2)

0824920111

nicci@executiveproperties.co.za

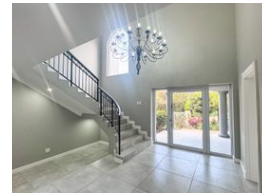
Contact Dainfern

011 4694107

11 Mulberry Hill Office Park
Broadacres Drive
Cnr William Nicol Road
Dainfern



Web Ref RL725



R75,000 pm

Monthly Levy R4,790

Lease Period 12 months

Availability Immediately

Deposit R80,000

Annual Escalation Negotiable

Lease Excludes:

Monthly levy, water and electricity



Luxury living in Dainfern Golf Estate

Dual Mandate

Complete Renovation. This impressive home meets a very high standard of opulent home life, as well as being situated in a very quiet and private cul-de-sac. Guest bedroom and dining room look out onto a lovely courtyard with fountain. A sweeping staircase leads to 3 large bedrooms upstairs, with beautiful neutral tiles and their own balconies. A country style kitchen with centre island, gas a hob on open-plan to the family lounge with a solid wood, built in bar. Receptions lead out onto an expansive patio which overlooks a pretty private garden and pool. Quality finished throughout this immaculately renovated and delightful family home. Under-floor heating. 2 garages and staff.

Dainfern is a mature, secure Golf and Residential Estate which has evolved over 1200 homes since its inception in 1992. The estate...

Features

Pets Allowed Yes

Interior

Bedrooms	4
Bathrooms	4
Kitchens	1
Recep. Rooms	3
Studies	1
Furnished	No

Exterior

Garages	2
Security	Yes
Dom. Accom.	1
Pool	Yes
Views	No

