



Nicci Humphreys
Principal Property Practitioner
Registered with PPRA (FFC 202 221 783 2)
0824920111

nicci@executiveproperties.co.za



Lara Pretorius
0836509044

lara@executiveproperties.co.za

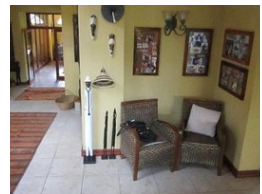
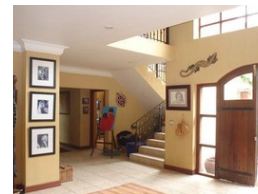
Contact Dainfern

011 4694107

11 Mulberry Hill Office Park
Broadacres Drive
Cnr William Nicol Road
Dainfern



Web Ref RL401



R45,000 pm

Monthly Levy R4,490 **Lease Period** 12 months **Availability** Immediately

Deposit R45,000 **Annual Escalation** 7 %

Lease Excludes:
Monthly levy, water and electricity

4 3.5 2

ELEGANT GRAND LIVING

This magnificent Mediterranean style home has lots of volume and space with 4 large family bedrooms and three bathrooms situated together on the upper level. Tasteful interior details with 4 entertainment areas including a solid wood fitted bar exuding a pleasant ambiance, a work-from-home office work station on the landing; spacious country style kitchen with centre island and built in breakfast table. Staff quarters and double garage.

Features

Pets Allowed Yes

Interior

Bedrooms 4
Bathrooms 3.5
Kitchens 1
Recep. Rooms 3
Studies 1
Furnished No

Exterior

Garages 2
Security Yes
Dom. Accom. 1
Pool Yes

