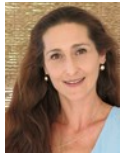


Nicci Humphreys
Principal Property Practitioner
Registered with PPRA (FFC 202 221 783 2)
0824920111
nicci@executiveproperties.co.za



Lara Pretorius
0836509044
lara@executiveproperties.co.za



Gavin Warmback
0825646858
gavin@executiveproperties.co.za

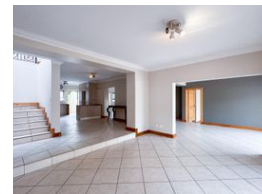
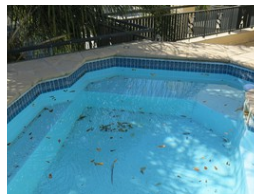
Contact Dainfern

011 4694107

11 Mulberry Hill Office Park
Broadacres Drive
Cnr William Nicol Road
Dainfern



Web Ref RL1126



R36,000 pm

Monthly Levy R4,790

Lease Period 12 months

Availability Immediately

Deposit R35,000

Annual Escalation Negotiable

4 3 2

Lovely home to rent !!

This lovely double storey home is located in a delightful tree adorned village in Dainfern. 3 Comfortable airy reception areas lead onto a covered patio with built-in braai. Separate guest bedroom with separate adjoining kitchen on the one side and the 3 family bedrooms with 2 full bathrooms upstairs. Under-floor heating designated areas and air-conditioners in 2 north facing bedrooms. The master suite has access to a sun drenched patio which backs onto the golf course. Small splash pool/Jacuzzi on patio - no garden. Staff quarters and double garage include Dainfern is a mature, secure Golf and Residential Estate which has evolved over 1200 home since its inception in 1992. The estate offers an unparalleled lifestyle and recreational experience centered around the Gary Player designed golf course enhanced by nature trails,...

Features

Pets Allowed Yes

Interior
Bedrooms 4
Bathrooms 3
Kitchens 1
Recep. Rooms 3
Furnished No

Exterior
Garages 2
Carports / Parkings 4
Security Yes
Dom. Accom. 1
Pool Yes
Views Yes

Sizes
Land Size 600m²

